



**MINISTRY OF SOCIAL  
DEVELOPMENT**

TE MANATŪ WHAKAHIATO ORA

**COMMUNITY INVESTMENT**  
TE HAUMI Ā-HAPORI



A photograph of a young child with dark hair, wearing a blue turtleneck sweater, smiling broadly while holding a yellow bell pepper. In the background, a woman with dark hair, wearing a red jacket, is also smiling. The scene appears to be indoors, possibly in a kitchen or dining area, with a table and some items visible in the foreground.

# Community Investment Strategy

# Why do we need a Community Investment Strategy?

A background image showing a smiling woman in a red top and a young boy in a blue turtleneck sweater, both smiling. They appear to be in a kitchen or a similar indoor setting. The boy is holding a yellow object, possibly a fruit or vegetable. The overall tone is warm and positive.

We want to be more:

- Focused on results
- Targeted
- Transparent
- Effective

# **The Social Investment approach**

***“Government investing in individuals and families today for measurably better long term results”***

- Minister English

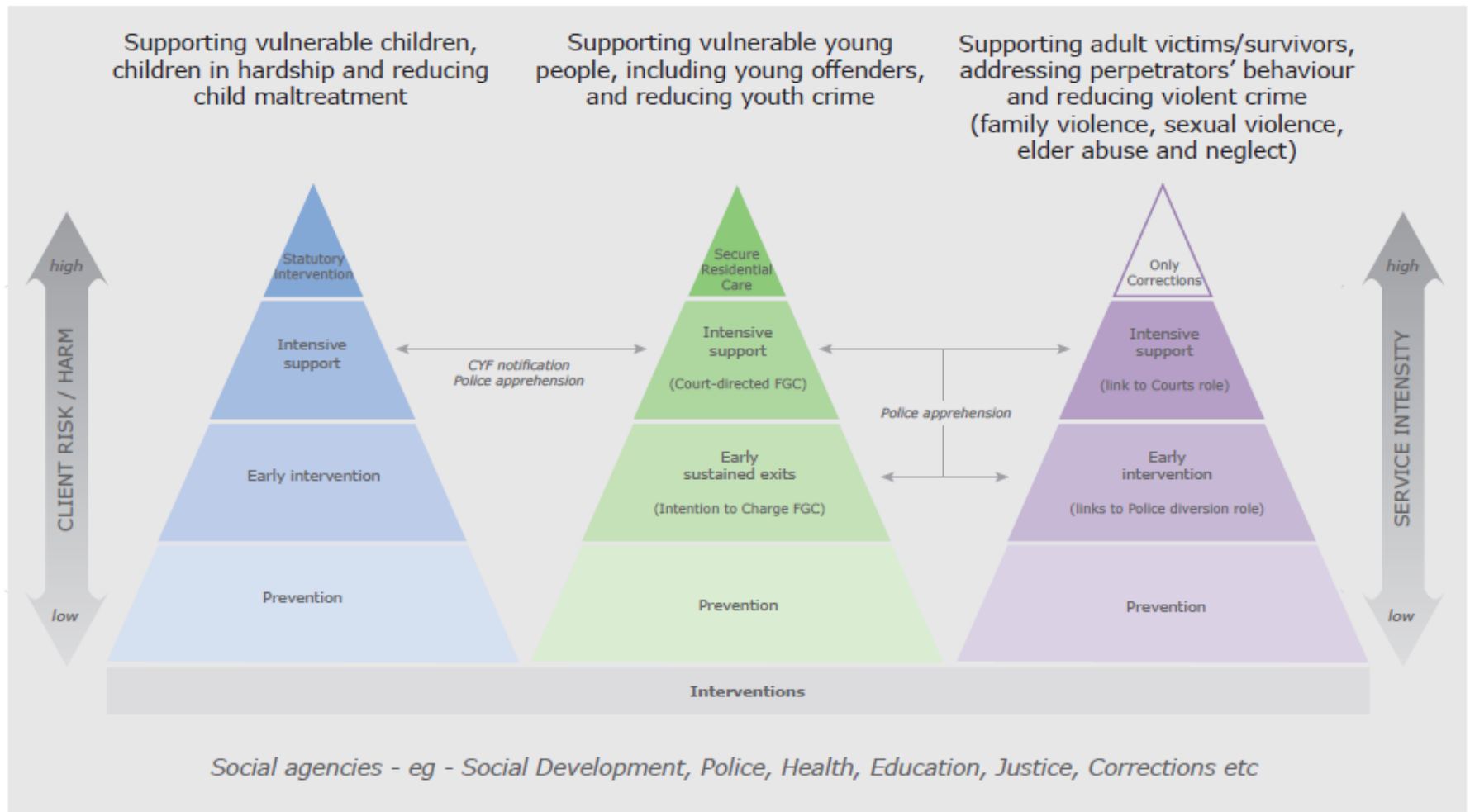
***“Regionally driven and nationally supported”***

- Minister Tolley

# Three priority results

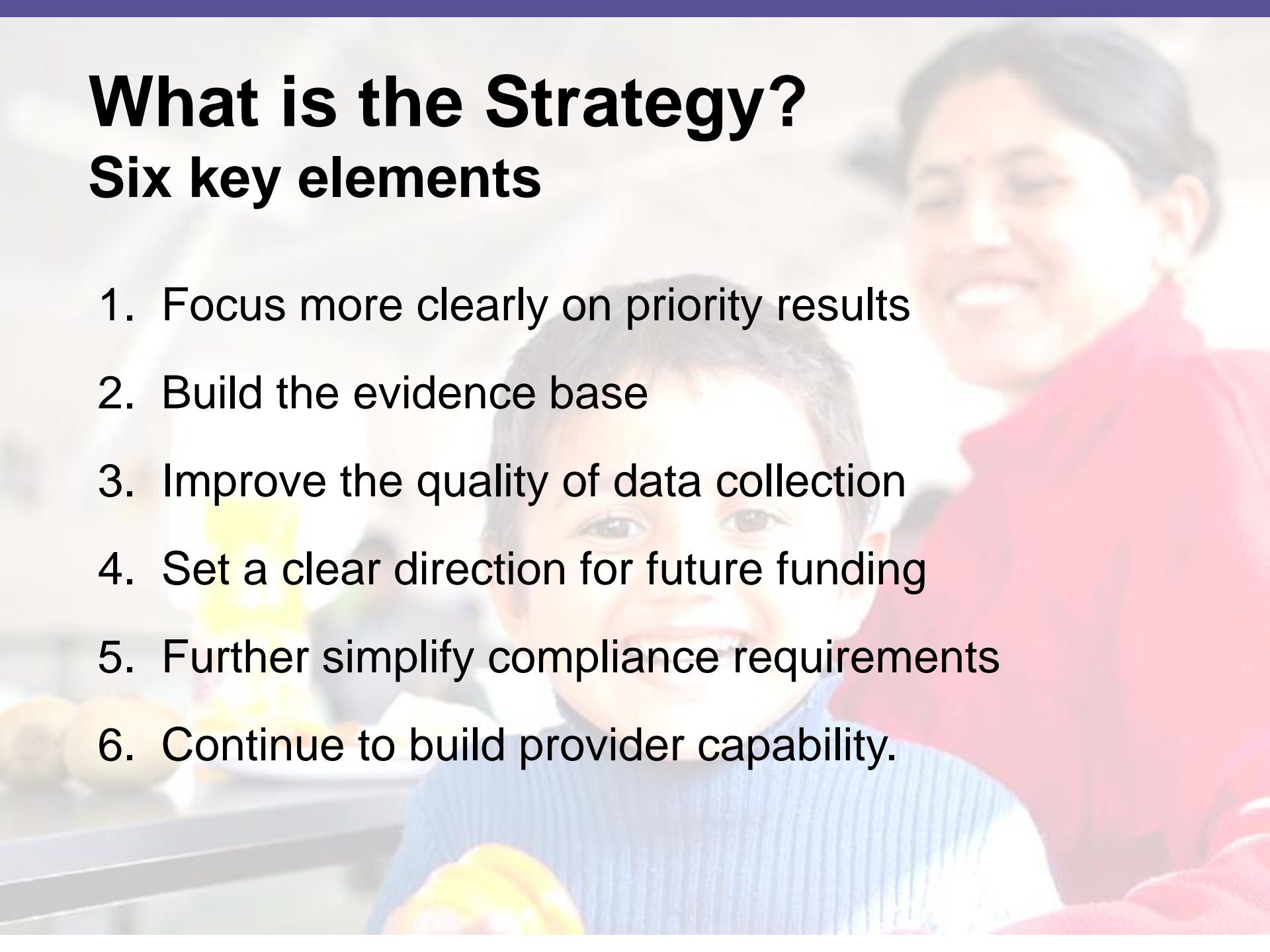
1. Supporting vulnerable children, children in hardship, and reducing maltreatment
2. Supporting vulnerable young people, including young offenders, and reducing youth crime
3. Supporting vulnerable adult victims / survivors, addressing perpetrators behaviour, and reducing violent crime

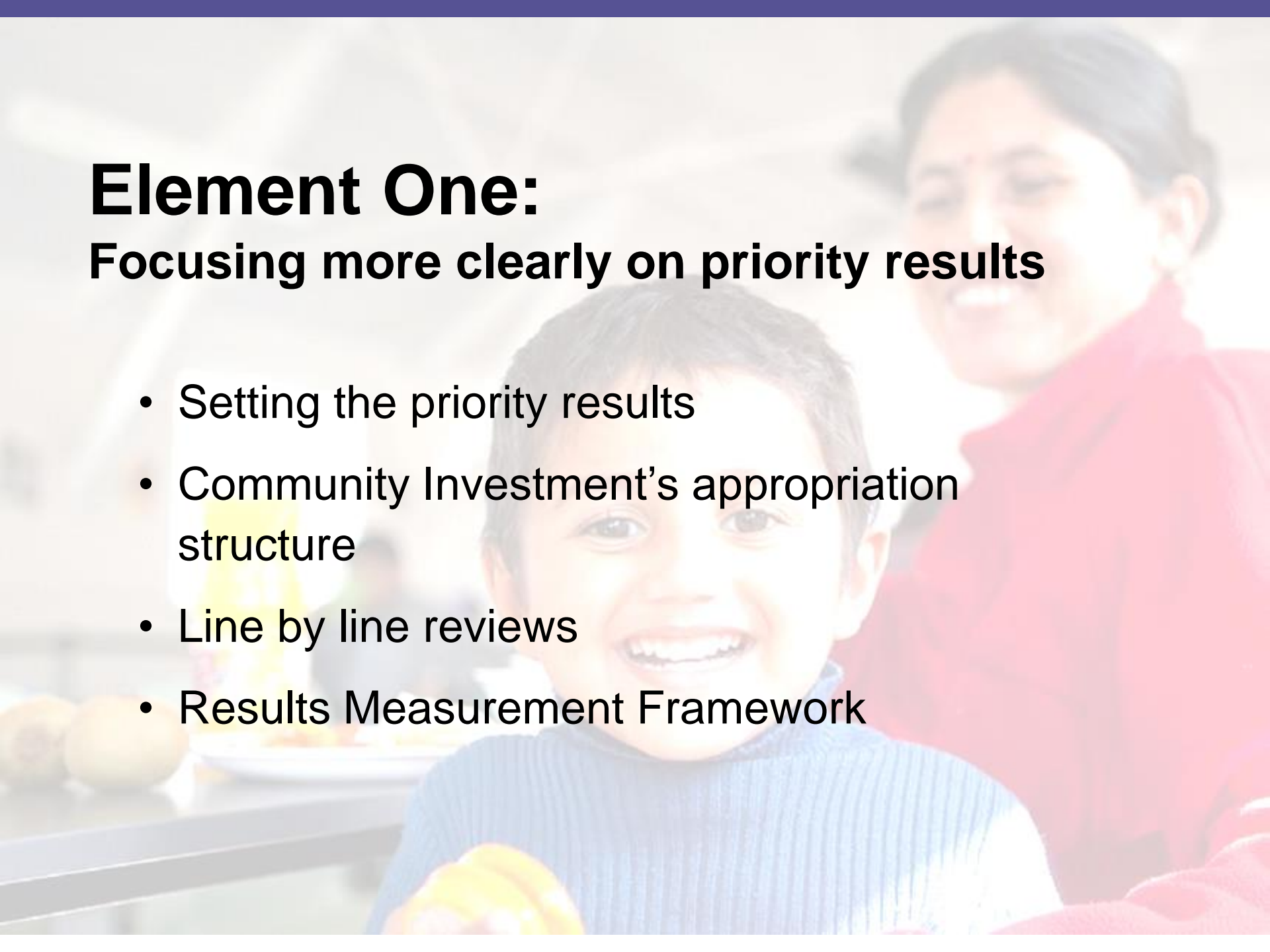
# Four intervention levels



# What is the Strategy?

## Six key elements

1. Focus more clearly on priority results
  2. Build the evidence base
  3. Improve the quality of data collection
  4. Set a clear direction for future funding
  5. Further simplify compliance requirements
  6. Continue to build provider capability.
- 



# **Element One:**

## **Focusing more clearly on priority results**

- Setting the priority results
- Community Investment's appropriation structure
- Line by line reviews
- Results Measurement Framework



# Review of services and programmes

Ensuring that purchased services:

- align to Government priorities
- are well targeted
- are performing to expectations
- have no unnecessary duplication or oversupply.

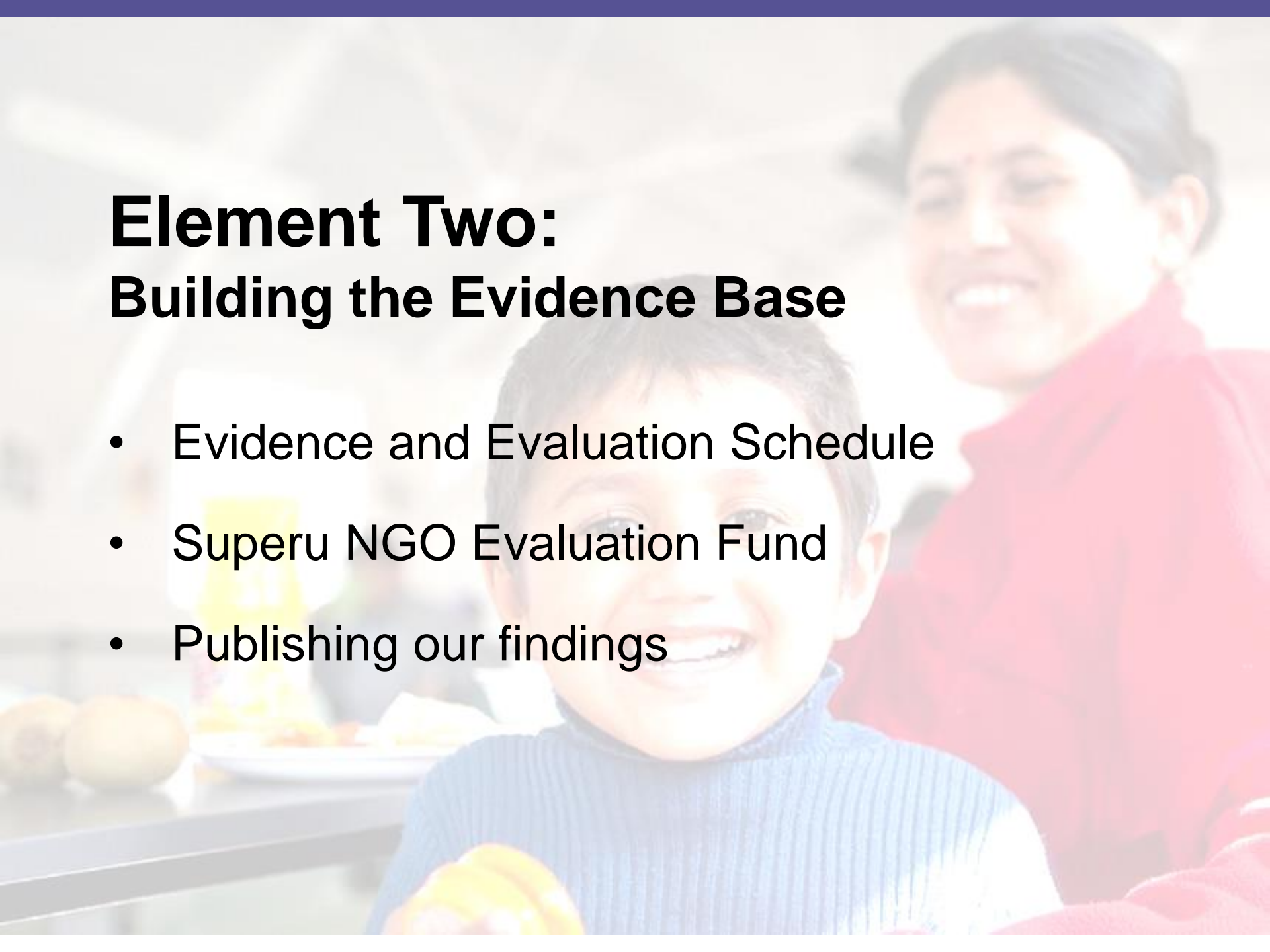
# Results Measurement Framework (RMF)

- provides line of sight to Government priorities
- will be phased in over three years



# What will the RMF measure?

- Demographic data (non identifiable)
- How much (quantity)
- How well (service quality in two levels)
- Is anyone better off (customer results)
- Continuous improvement narrative reporting

A photograph of a smiling woman with dark hair, wearing a red top, standing behind a young child with dark hair, wearing a blue turtleneck sweater. They are in a kitchen setting, with a table in front of them holding a glass of orange juice and some food. The image is slightly blurred and has a soft, warm tone.

## **Element Two: Building the Evidence Base**

- Evidence and Evaluation Schedule
- Superu NGO Evaluation Fund
- Publishing our findings



## **Element Three: Improving the quality of data collection**

- Data analysis
- Data collection (client / customer level)
- Data storage

A photograph of a smiling woman with dark hair, wearing a red top, standing behind a young child with dark hair, wearing a blue sweater. They are in a grocery store, with a yellow bell pepper visible in the foreground. The image is slightly blurred and has a soft, warm tone.

# **Element Four:**

## **Setting a clear direction for future funding**

- Re-releasing the Strategy annually
- Communities being clear about where we are heading
- Better quality, collaborative strategic planning
- Funding allocation to areas of greatest need

# **Element Five:**

## **Further simplifying compliance requirements**

- Streamlining our contracting and monitoring system
- Aligning our Approvals framework within MSD
- Progressing the Cross-Government Accreditation project



# Element Six:

## Building provider capability

- Realigning the Capability Investment Resource
- Linking results based measures and continuous improvement
- Strengthening the reporting system
- Tools and resources for staff and providers



A young boy with dark hair, wearing a blue turtleneck sweater, is smiling broadly and holding a yellow bell pepper. Behind him, a woman with dark hair, wearing a red top, is also smiling. The background is a bright, slightly blurred kitchen or dining area with a table, a yellow bottle, and some food items.

**Thank you!**